



Instructions

Solvent Selectors

Part Numbers 21044001 and 21044002

The optional two inlets and four inlets solvent selectors are designed to allow users to pump different solvents without handling tubing and solvent bottles. Low pressure valves installed below the pump heads accommodate up to two or four solvents according to the model. The same valve is installed on both pumps 'A' and 'B'.

Although solvent selectors can be ordered together with the VERITY® 3240 High Pressure Binary Gradient Pump and installed on the pump at the factory, solvent selectors can also be installed (or modified) in the field.

PART NUMBER	DESCRIPTION
21044001	SOLVENT SELECTORS, 2x2 IN, V3240-150 Two inlets solvent selector with two valves (one for each pump head)
21044002	SOLVENT SELECTORS, 2x4 IN, V3240-150 Four inlets solvent selector with two valves (one for each pump head)

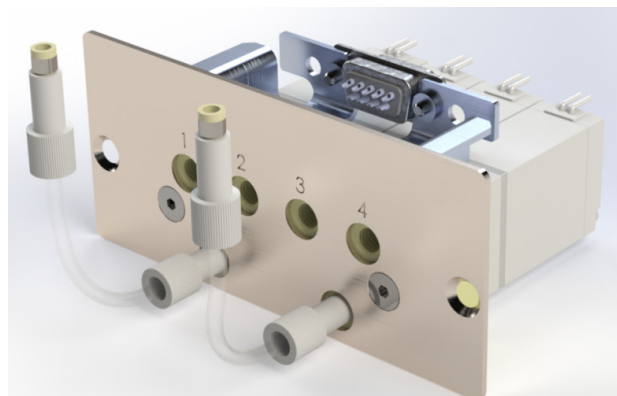


Figure 1
Four Inlets Solvent Selector

Inlet tubing assemblies are provided with the solvent selectors (quantity 4 for part number 21044001, quantity 8 for part number 21044002). Tubing assemblies to connect solvent selectors to pump heads are also provided.

Installation

1. Purge the pump with a suitable solvent.
2. Power off the instrument and disconnect the power cord.
3. Remove the front door and the leak sensor (if installed).



4. Disconnect the solvent inlet lines, the inlet tees and the tee tubing assemblies by loosening the fittings from the check valves connectors by hand.
5. Loosen the screws securing the front cover plates (two screws per plate, on the edges) with a 2.5 mm Allen wrench and remove the cover plates.
6. Insert the solvent selectors by sliding the side guides into the internal notches until the solvent selectors fit properly. This ensures a suitable electrical connection. Use your fingers move the cables down slightly for a proper fit, if necessary.
7. Attach the solvent selectors using the screws from the cover plates.
8. Check that the ferrules and the lock rings are correctly seated at the end of the tubing.
9. Connect the tubing assemblies between the solvent selectors outlets and the check valves connectors by screwing on the PEEK nuts and then finger-tightening them.
10. Connect the solvent inlet lines to the inlet ports of the solvent selectors by screwing on the PEEK nuts and then finger-tightening them.
11. Check that the super flangeless fittings are tight enough to prevent air from entering the hydraulic lines.
12. Slide the springs to place their ends in the knurled part of the PEEK nuts. Springs are used to prevent the tubes from bending.
13. Thread the solvent lines through the side of the pump before placing the ballasts or inlet filters in the appropriate solvent bottles.
14. Reinstall the leak sensor (if present) and the front door.

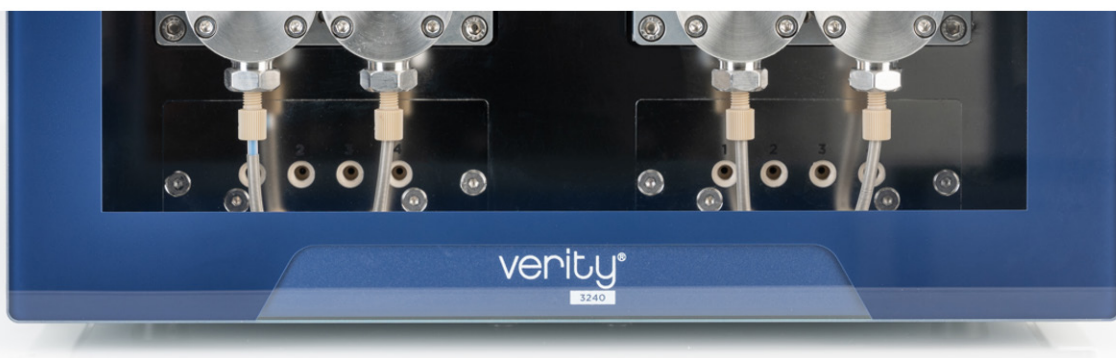


Figure 2
Four Inlets Solvent Selectors Installed on VERITY® 3240 High Pressure Binary Gradient Pump