



Instructions

Solvent Bottle Trays

Part Numbers 21044034 and 21044035

These accessories are for use with the VERITY® 3240 High Pressure Binary Gradient Pump. Two models are available that can be ordered with the pump or added afterwards in the field.

PART NUMBER	DESCRIPTION
21044034	LARGE SOLVENT BOTTLE TRAY, VERITY 3XXX
21044035	NARROW SOLVENT BOTTLE TRAY, VERITY 3XXX

The large tray covers the full top of the pump. It holds up to twelve 0.5 L bottles, nine 1 L bottles, four 2 L bottles, or three 5 L bottles, allowing enough bottle storage for a pump equipped with solvent selectors.

The narrow tray covers 2/3 of the top of the pump. It holds up to eight 0.5 L bottles, six 1 L bottles, three 2 L bottles, or two 5 L bottles.



Figure 1
Large Solvent Bottle Tray with 1 L Bottles on VERITY® 3240 High Pressure Binary Gradient Pump

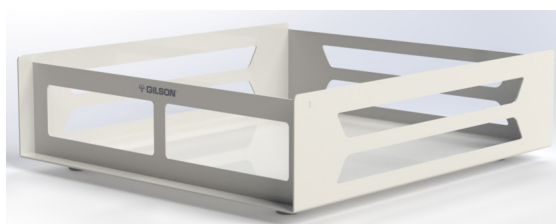


Figure 2
Large Solvent Bottle Tray

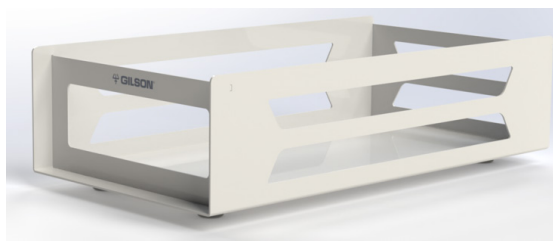


Figure 3
Narrow Solvent Bottle Tray

A tubing support for 1/8" OD tubing is provided to route and hold the solvent lines between the pump and the tray. The trays include an adapter for drain tubing connection. The drain tube supplied connects the tray to a waste container.



Installation

1. Attach one end of the drain tube to the barbed adapter on the rear of the tray with a gentle twist motion and push the tubing as far as required.
2. Place the solvent bottle tray on top of the pump ensuring the feet fit properly in the indents of the pump cover. The narrow tray is placed on the left side of the cover.

NOTE

The narrow solvent bottle tray can be placed on top of the VERITY® 1741 UV-VIS Detector.

4. Attach the tubing support on an edge of the pump or the tray and then clip the 1/8" OD tubing inside the support slots.

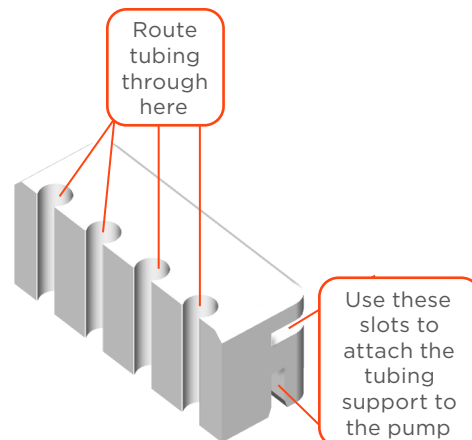


Figure 4
Tubing Support

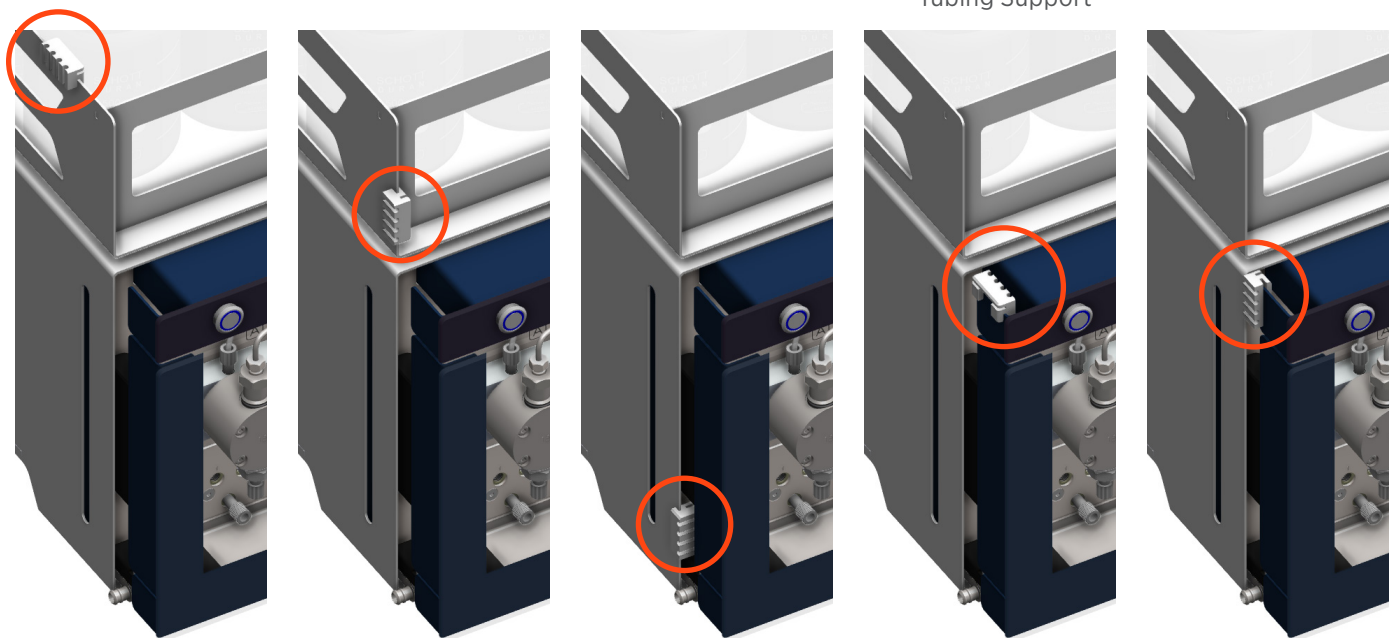


Figure 5

Tubing Support Placement Options on VERITY® 3240 High Pressure Binary Gradient Pump

5. Route the drain tubing and put the other end into suitable waste receptacle.

NOTICE

Ensure that the waste container is directly below the outlet and that there are no loops or bends in the drain tubing. Affix the drain tubing to the inlet of the waste container so that the end of the tubing never submerges into the liquid. Cut the tubing if needed.

If the solvent you are using is not compatible with the drain tubing, such as tetrahydrofuran (THF), use a piece of PTFE tubing or any material compatible with your solvent in its place (3/8" OD-1/4" ID).