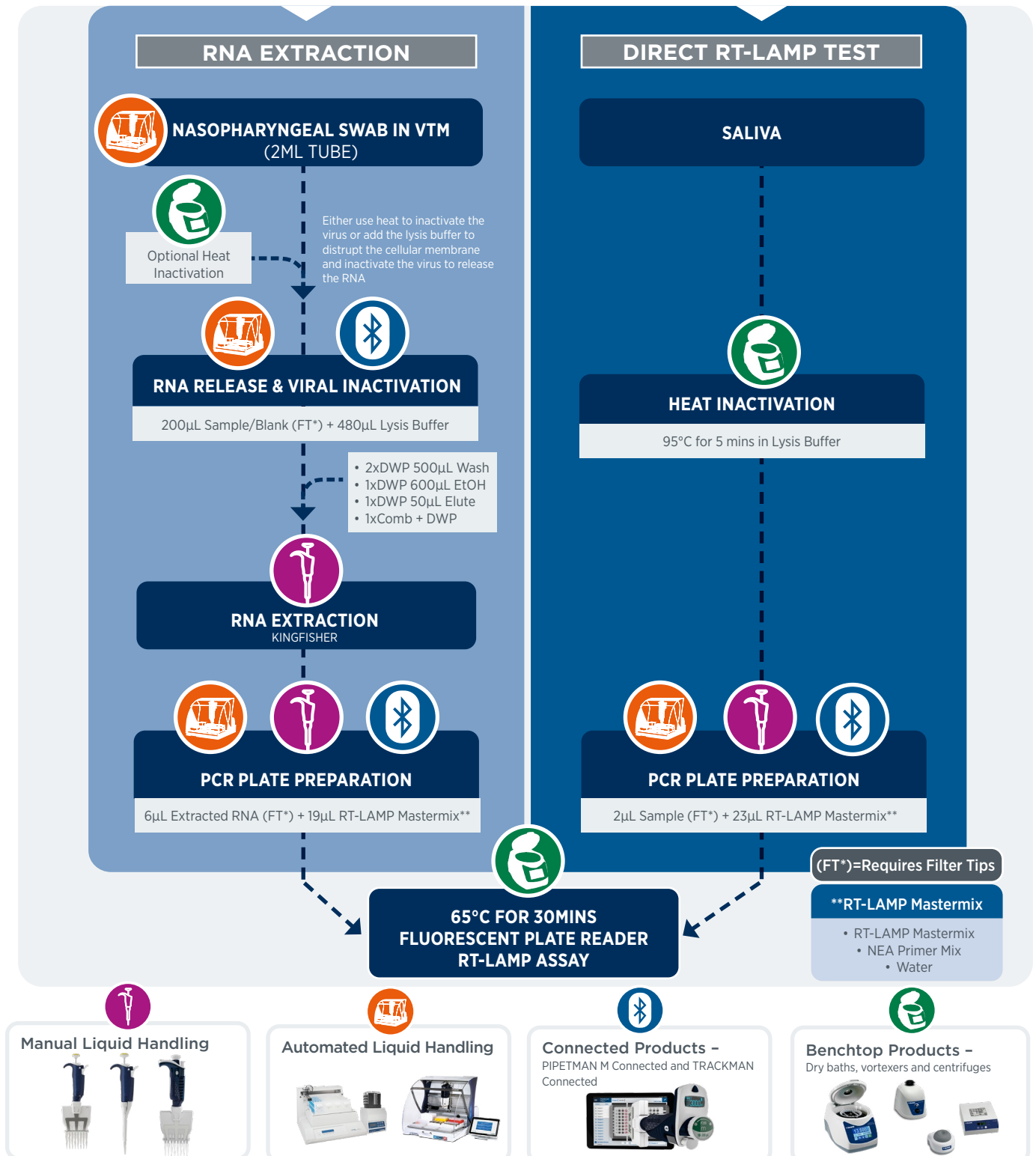




In today's clinical environment, COVID-19 testing is of paramount importance and is growing in numbers on a daily basis. Here we show how our Gilson portfolio of products fit into the COVID laboratory workflow. Several different product lines are represented including manual and automated liquid handling, benchtop products, and our latest Bluetooth® electronic pipettes with the TRACKMAN® Connected platform. Each step of the process is illustrated with a description of the products and how they can help to improve the quality of your results and enhance your sample integrity.



# Gilson's SARS-CoV-2 Workflow



**Manual Liquid Handling** – For every step of the COVID testing workflow, where accurate and reproducible transfer of samples and reagents is required.

- Full range of manual pipettes, including single- and multi-channel and Bluetooth® connected
- Complementary range of Gilson PIPETMAN® DIAMOND tips, in a range of sizes and packaging options
- PIPETMAN® M 1200µL – for preparation of KingFisher RNA extraction deep well plates
- Pipette Service & Calibration – Gilson's Accredited Pipette Service Centre can provide onsite pipette clinics or back to base service programs to the exact level and frequency of service and calibration required by your facility



## Automated Liquid Handling

- **PIPETMAX®** - automates the majority of the Covid protocol, freeing up your time for other laboratory tasks.
  - » Low cost entry level automation
  - » qPCR Assistant enables you to design and run your qPCR Covid tests automatically
  - » 4 x 200µL pipette head enables fast sample transfers from tubes to plates
  - » Bespoke PCR cabinet with UV light and HEPA filtration
  - » Final report tracks can be directly imported into your thermocycler



## Automated Viral Transport Media (VTM) Tube Filling

- » Compact, low cost tube filling system
- » Flexible tube/vial/plate holders
- » Peristaltic pumping technology for dispensing
- » Small footprint for use in biosafety cabinets
- » Quick start-up and installation
- » Easy-to-sterilize flow path for minimized contamination



**Connected Products** – PIPETMAN® M Connected and TRACKMAN® Connected - Enhanced manual pipetting with the ability to add sample traceability in conjunction with intelligent pipetting.

- Full range of programmable, electronic pipettes
- Work in conjunction with the TRACKMAN® Connected tablet
- Full traceability for transfers from tubes to plates
- qPCR template to plan and execute your qPCR or RT-LAMP test
- Import your sample list
- Scan bar codes and record results with the built in camera
- Results saved in SciNote's ELN



**Benchtop Products** – Dry baths, vortexers and centrifuges.

- Dry baths
  - » For heat inactivation of the virus
  - » RT-LAMP development of test
- Plate and tube centrifuge
  - » To mix samples and reagents
  - » To remove air bubbles from PCR plates
- Vortex mixers
  - » High speed mixing of samples and reagents
  - » Mixing of Mastermix components
  - » Mixing of sample and lysis buffer



**Pipette Tips** – From positive displacement tips to sterilized filter tips, we offer an extensive range of tips with easy-to-identify packaging that fit your budget and research needs, ensuring sample integrity.



**Instrument Service** – Keep your instruments running like new with our preventative maintenance programs, extended warranty contracts, rapid in-house or on-site repair service and performance verification.